

## VentilCassaforma

CHF

Template for recessed installation of  
fancoils in the wall

R410A

Aermec  
participate in the EUROVENT  
program: LCP/A/P/C  
the products are present on the site



### FEATURES:

**VentilCassaforma** has been designed to respond to the needs of rationalise spaces to suit modern interior architecture.

**VentilCassaforma** is a galvanised template that makes it possible to make a space to house fan coils in the wall. The template will make masonry work easier during the construction of a niche where the fan coil will be installed. When the work is finished, the fan coil will be completely hidden from view.

**VentilCassaforma** is available

- for fan coils in the FCX-USP series in 2 pipe systems and with 4 pipe systems

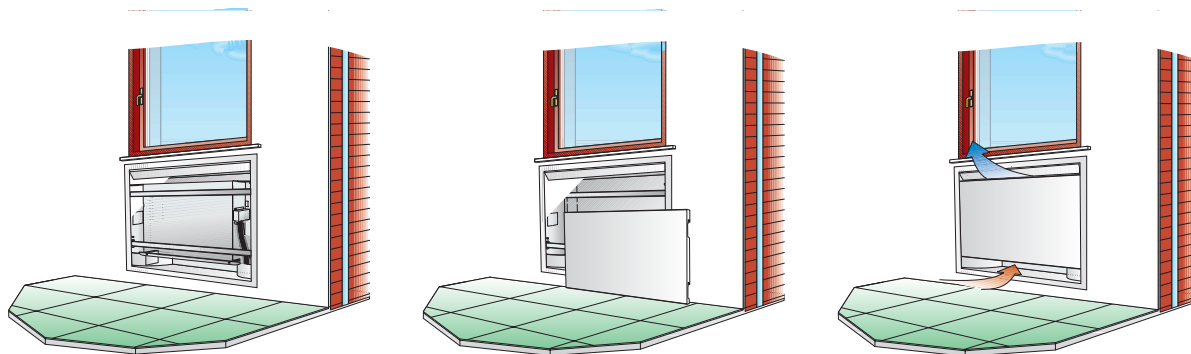


### Characteristics

- Available for fan coils:  
CHF : VentilCassaforma for FCX-P fan coils. Available in 5 sizes
- VentilCassaforma is made up of the following parts to be assembled:
  - Recess box;
  - Closure panel;
  - Outer frame with deflector
  - Cover bases, cross-members, covers.

All parts are made of galvanised steel and treated with epoxy-polyester resinbased thermo-hardening base paint in grey with rough glazed finish in order to hold the paint. The final colour can be chosen by the client.

- Closure Panel: Made of galvanised steel, this is the box housing the fan coil. The box is recessed in the wall during building work making the construction of a niche where the fan coils will be installed much easier. Holes for fitting the fan coil and preparing an electric plant with a socket and GEWISS fuse holder are already present on the back panel. The box can accommodate the hydraulic system pipes and condensation drain pipes thanks to the presence of several easily-removable elements on the sides and base.
- Closure Panel: made of steel pre-treated with base paint and no slots present. Easily removable for servicing and cleaning the air filter.
- Outer Frame: the perimeter of the box has an outer frame made of pre-treated steel making it possible to cover the perimeter part of the wall and hide any imperfections that overtime show possible crumbling on the edge of the plaster work.
- Deflector: manual, with which the flow of air can be directed into the room. The deflector is incorporated in the frame.



### VentilCassaforma - combination

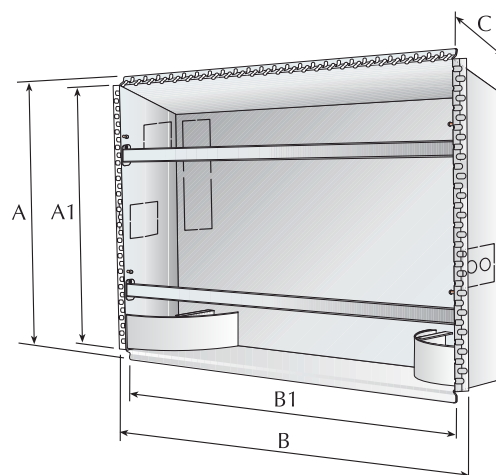
#### VentilCassaforma CHF - FCXP combination

VentilCassaforma	CHF 17	CHF 22	CHF 32	CHF 42	CHF 62
Fan coil	FCX 17 P	FCX 22 P	FCX 32 P	FCX 42 P - 50 P	FCX 62 P - 82 P - 102 P
		FCX 24 P	FCX 34 P	FCX 44 P - 54 P	FCX 64 P - 84 P

The fan coils FCX P can be inserted into 2 pipe systems, 2 pipe systems with resistance and 4 pipe systems

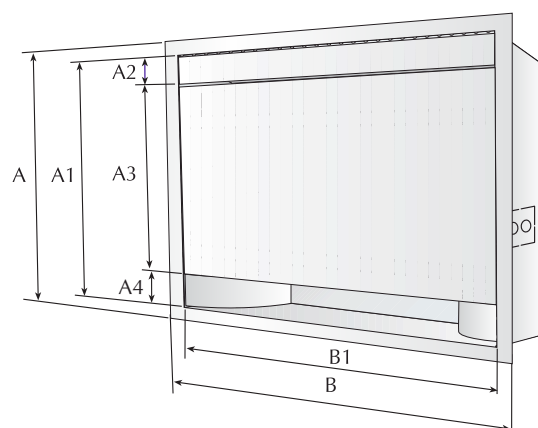
### Dimensions (inches)

CHF		17	22	32	42	62
Height	A	28.66"	28.66"	28.66"	28.66"	32.79"
	A1	26.92"	26.92"	26.92"	26.92"	31.06"
Width	B	28.81"	33.15"	42.24"	50.90"	55.67"
	B1	26.93"	31.26"	40.35"	49.02"	53.78"
Depth	C	9.45"	9.45"	9.45"	9.45"	9.45"



### Outer frame and closure panel

CHF		17	22	32	42	62
Height	A	29.92"	29.92"	29.92"	29.92"	34.1"
	A1	26.77"	26.77"	26.77"	26.77"	30.91"
	A2	3.66"	3.66"	3.66"	3.66"	3.66"
	A3	19.41"	19.41"	19.41"	19.41"	23.54"
	A4	3.7"	3.7"	3.7"	3.7"	3.7"
Width	B	29.65"	34"	43.07"	51.73"	56.5"
	B1	26.5"	30.83"	39.92"	48.6"	53.35"



The technical data in this document are not binding.  
Aermec S.p.A. reserves the right to make whatever modifications  
it deems necessary to improve the product at any time.